



Transforming Public Health Data to Support Health Equity

Contexture 15th Annual Arizona HIE Summit & Trade Show
September 19, 2022



Speakers



Matthew Isiogu (he/him)

Senior VP of Innovation



Siman Qaasim (she/her)

Health Equity Administrator



ARIZONA DEPARTMENT OF HEALTH SERVICES
Health and Wellness for All Arizonans



Diana Gomez (she/her)

Director of Public Health



Session Topics

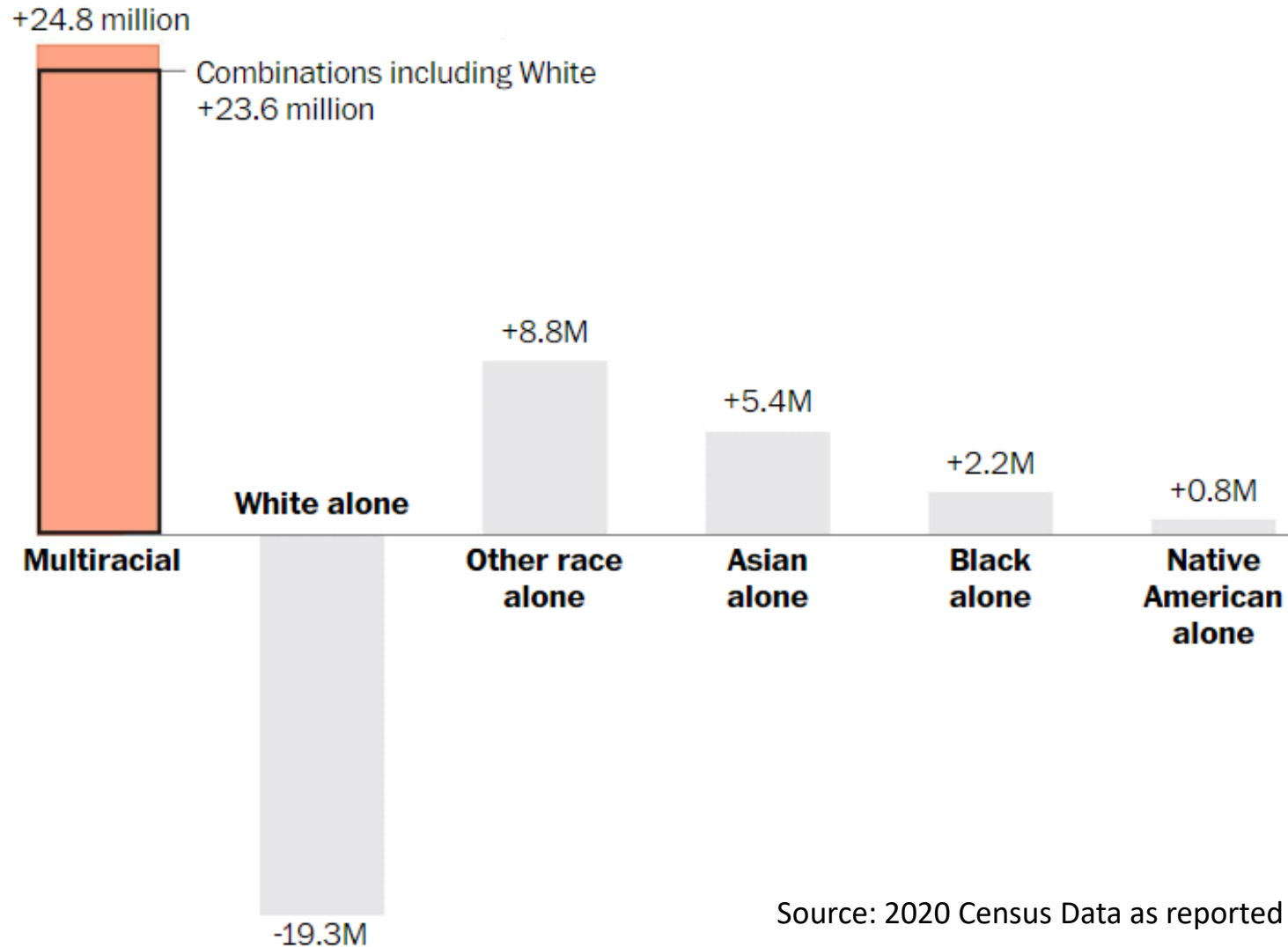
- How public health agencies are using health data to support health equity initiatives at the state and local levels
- Downstream impacts to data analysis from how data elements are defined and used by communities
- Issues impacting data on race, ethnicity, language, sexual orientation, and gender identity

What data does public health need to advance health equity?

How can Contexture and its participants support this vision?

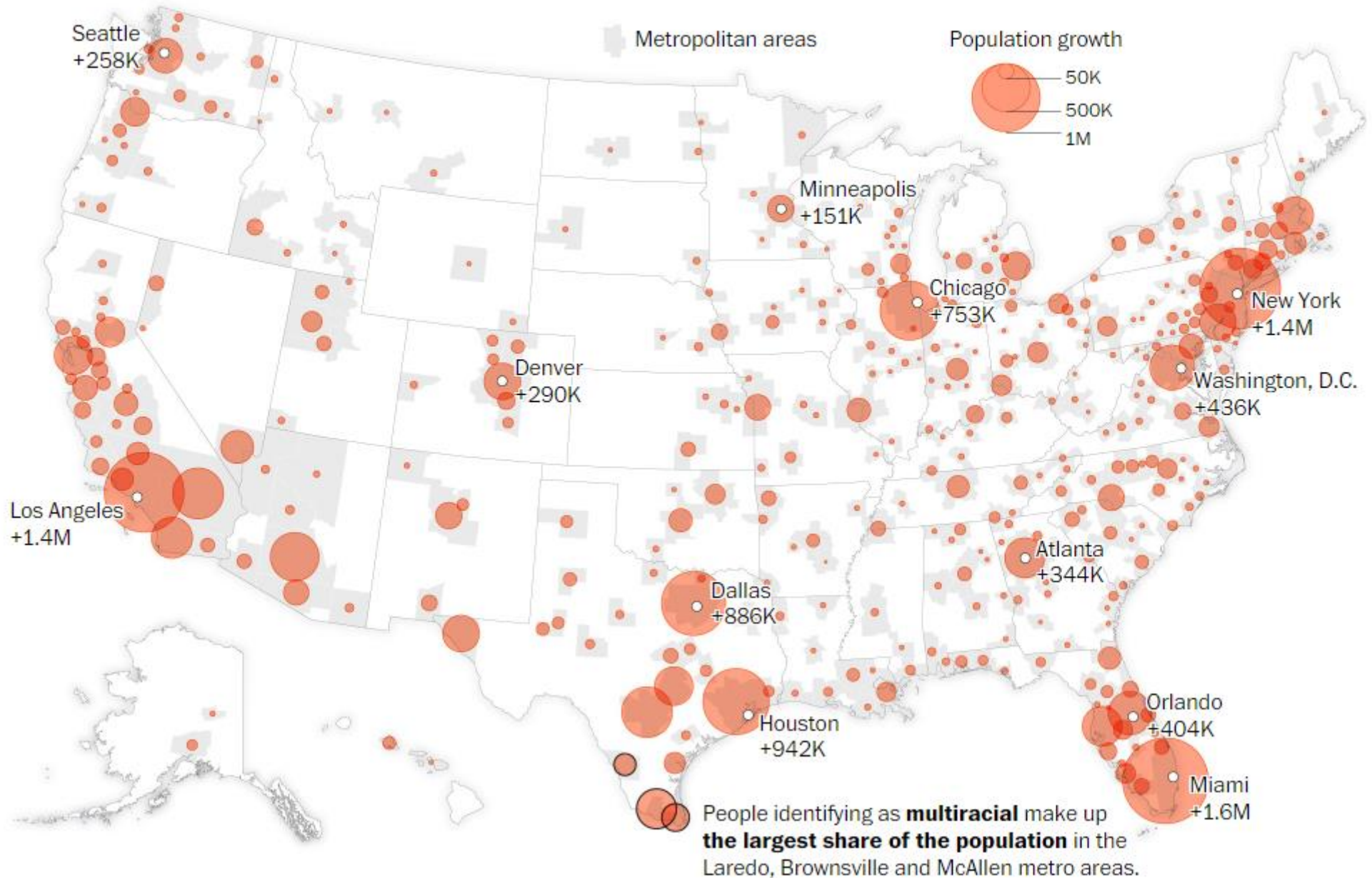
U.S. Trend in Racial Self-Identification

Here's how census numbers on race changed from 2010 to 2020





Multiracial populations increased faster than any single race across the U.S. in the last census. Gains were highest in major metro areas, but the number of people identifying as multiracial also tripled in non-metro areas.





Arizona Department of Health Services

Siman Qaasim | Health Equity Administrator



ARIZONA DEPARTMENT
OF HEALTH SERVICES



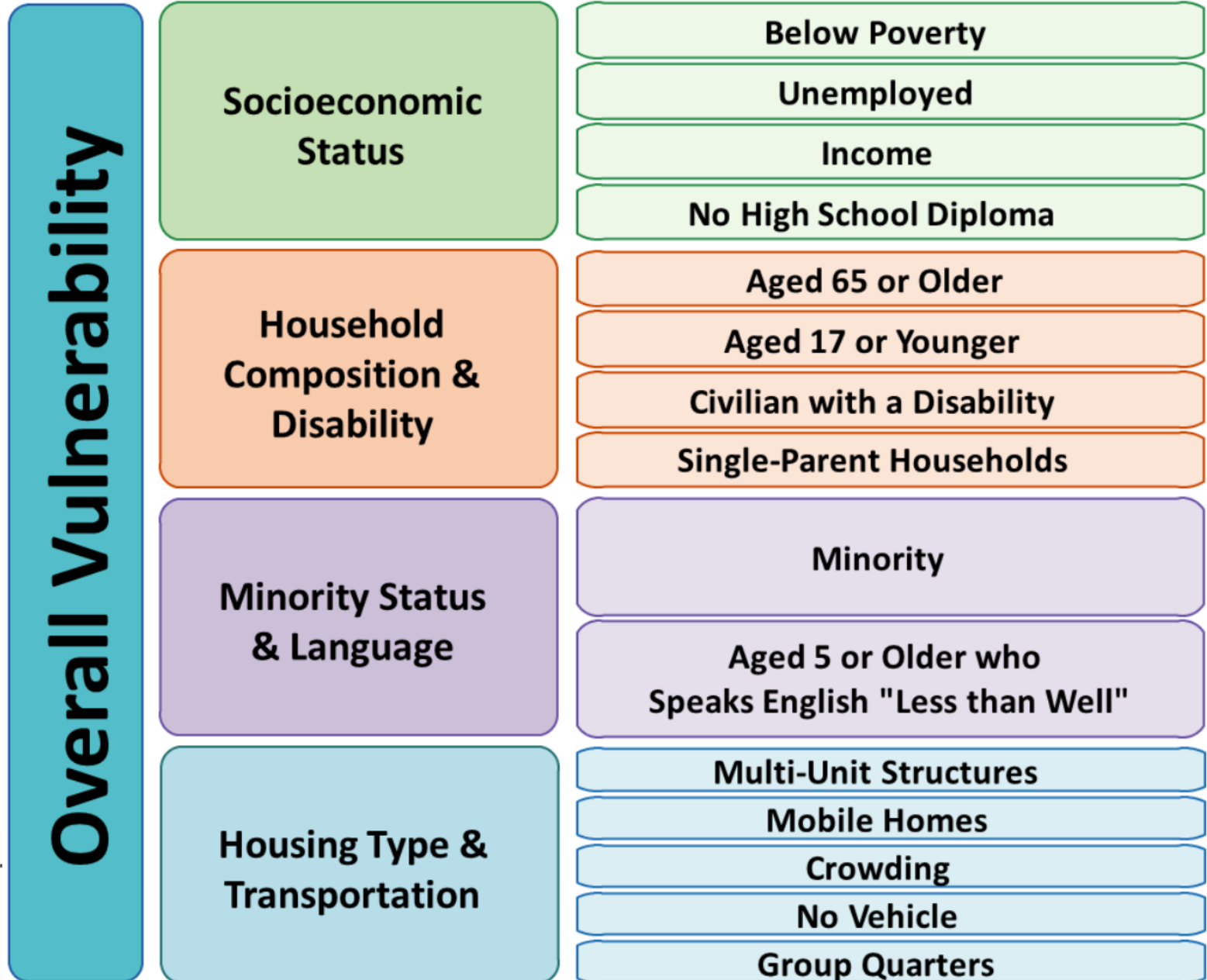
Who are these nice people?



ARIZONA DEPARTMENT
OF HEALTH SERVICES

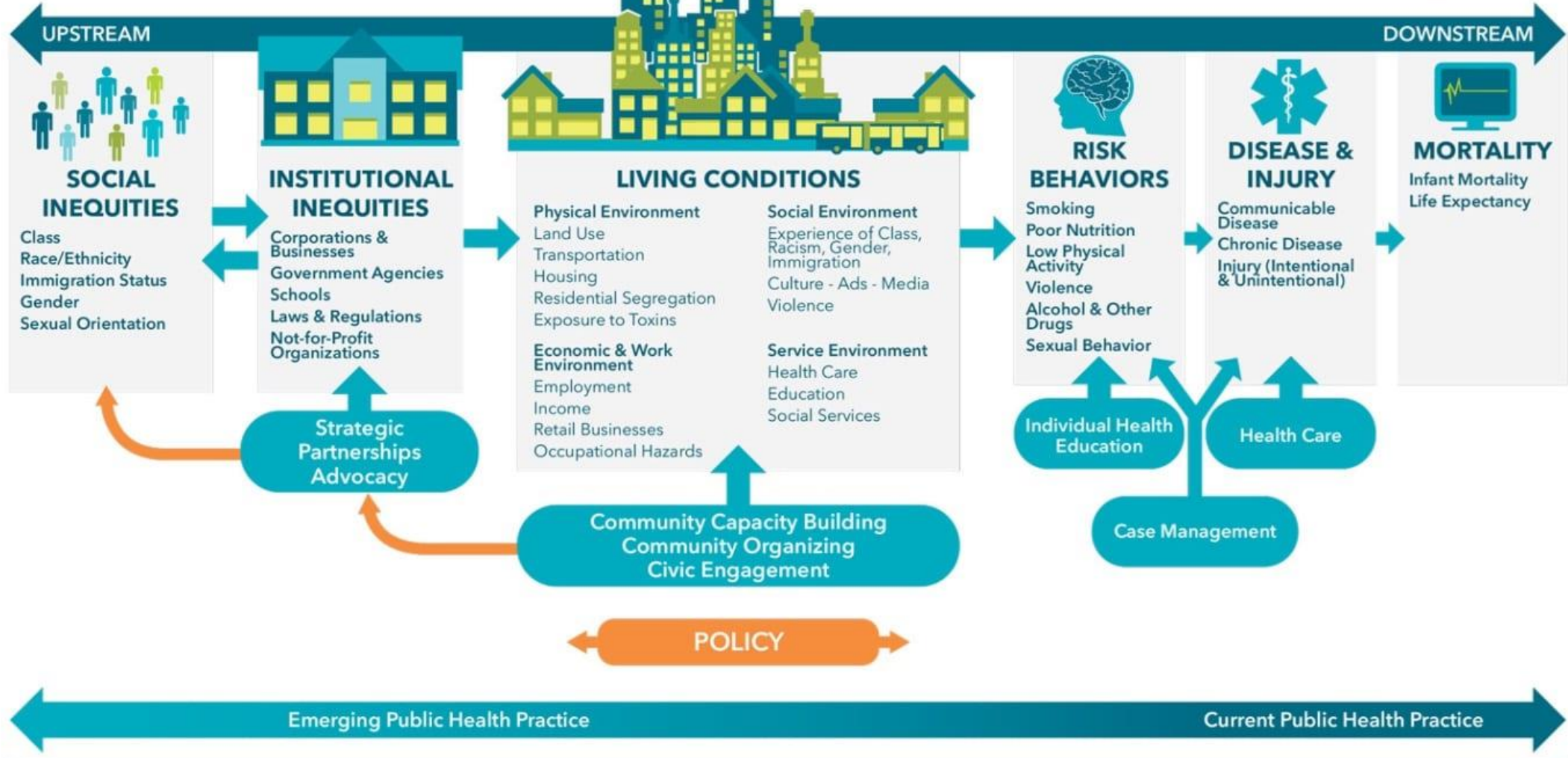
SVI Inputs

- Relative amount of challenges and barriers faced by residents of every census tract
- U.S. Census variables
 - 15 social factors
 - Grouped into 4 themes



ARIZONA DEPARTMENT
OF HEALTH SERVICES

A PUBLIC HEALTH FRAMEWORK FOR REDUCING HEALTH INEQUITIES
 BAY AREA REGIONAL HEALTH INEQUITIES INITIATIVE





Yuma County Public Health District

Diana Gomez | Director



Yuma County, Arizona



- * Located in the southwest corner of Arizona
- * Shares southern border with Sonora, Mexico
- * Shares western border with Imperial County, California
- * Home to 2 tribal nations
- * Home to 2 large military bases
- * Between November – March 90% of all leafy green vegetables are grown in Yuma County
- * Population of 215,000 nearly double during the fall/winter. Due to influx of winter visitors, seasonal agricultural workers, and H2A visa holders.

Public Health Data Sources

Public Health Dashboard

Electronic Health Record

Disease Surveillance System

Wastewater Surveillance

Survey & Interview

Arizona Department of Health Services

Centers for Disease Control

HRSA

County Health Rankings

Individual Health Data

Demographic Vital Record Data

Hospital Admission Data

Disease Trends

Demographics

Lab Reported

Program Utilization

Sampling data in open and closed environments

Genotyping

Predictive Local focus anonymous

Town Hall

Community Health Workers

CDC Epi Aids

Generalized BRFFS/YRBSS

Enhancing Public Health Data Systems

Challenge	Potential Enhancement
Data Collection Process	Engage public health stakeholders in development process
Sustainability	Increases equity focused data literacy across sectors
Data Governance/Stewardship	Interoperable data systems, tech support for rural areas, shared guidelines for data governance
Relevance of data	Develop methods for collecting and interpreting community driven, locally generated public health data.
Gaps in Data	Data collection tools and processes that capture local health needs/challenges of marginalized populations
Building Equity Focus into Policy Development	Community engagement and input, develop data driven frameworks
Interpretation	Discuss function/role of Chief Health Strategist & Knowledge Broker



Questions & Discussion



contexture.org

Creating connections. Improving lives.